

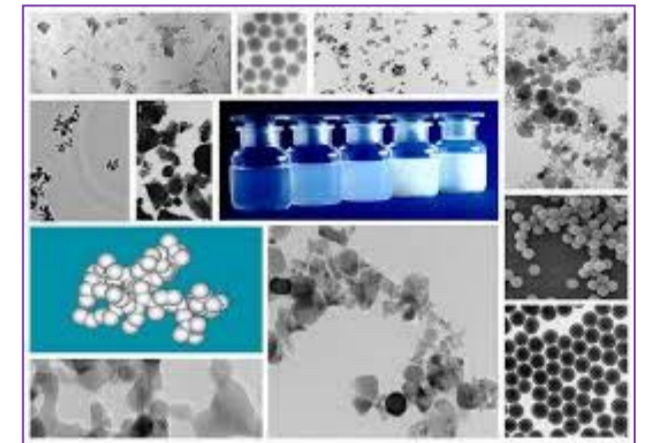
# Nanoparticles Characterization

*Providing reliable and fast analytical services for your QC demands*

Promotion Package:  
**NTD 18,000 / sample**  
**Buy 5, get 1 free !**

Characterize the primary particle in nanomaterials, including:

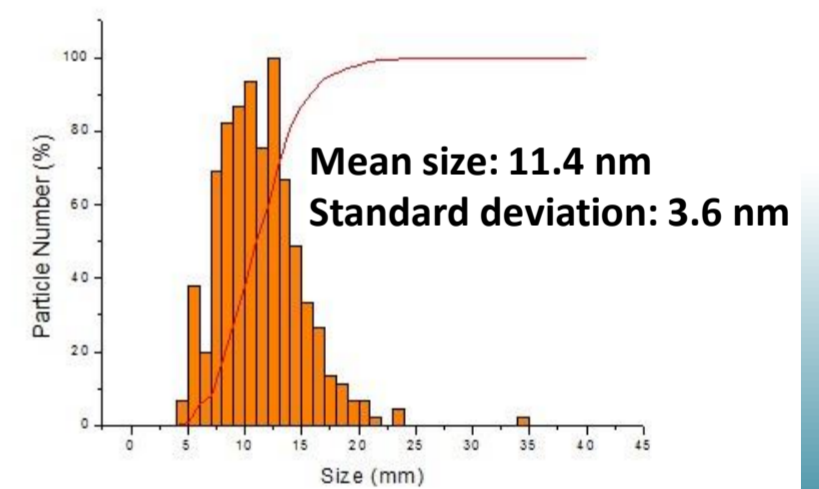
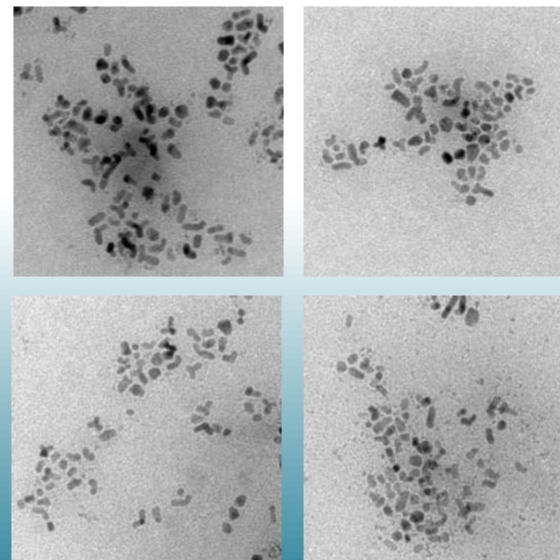
**Size, Shape, Composition etc.**



## SIZE DISTRIBUTION

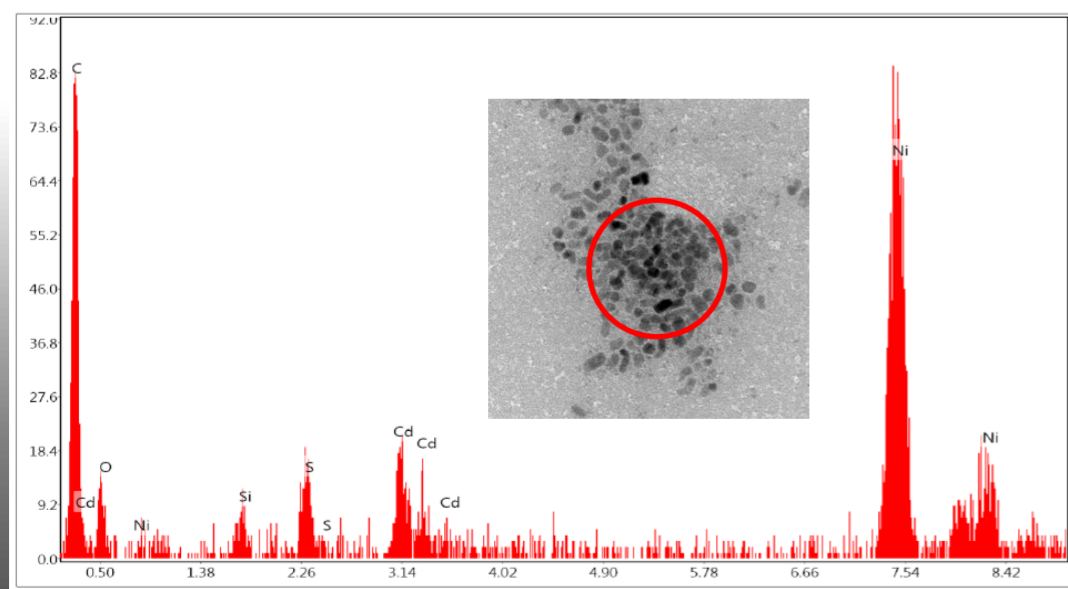
Transmission electron microscope

**Primary particles size and shape analysis**



## COMPOSITION

TEM / Energy-Dispersive X-ray Spectrum



**Composition characterization**

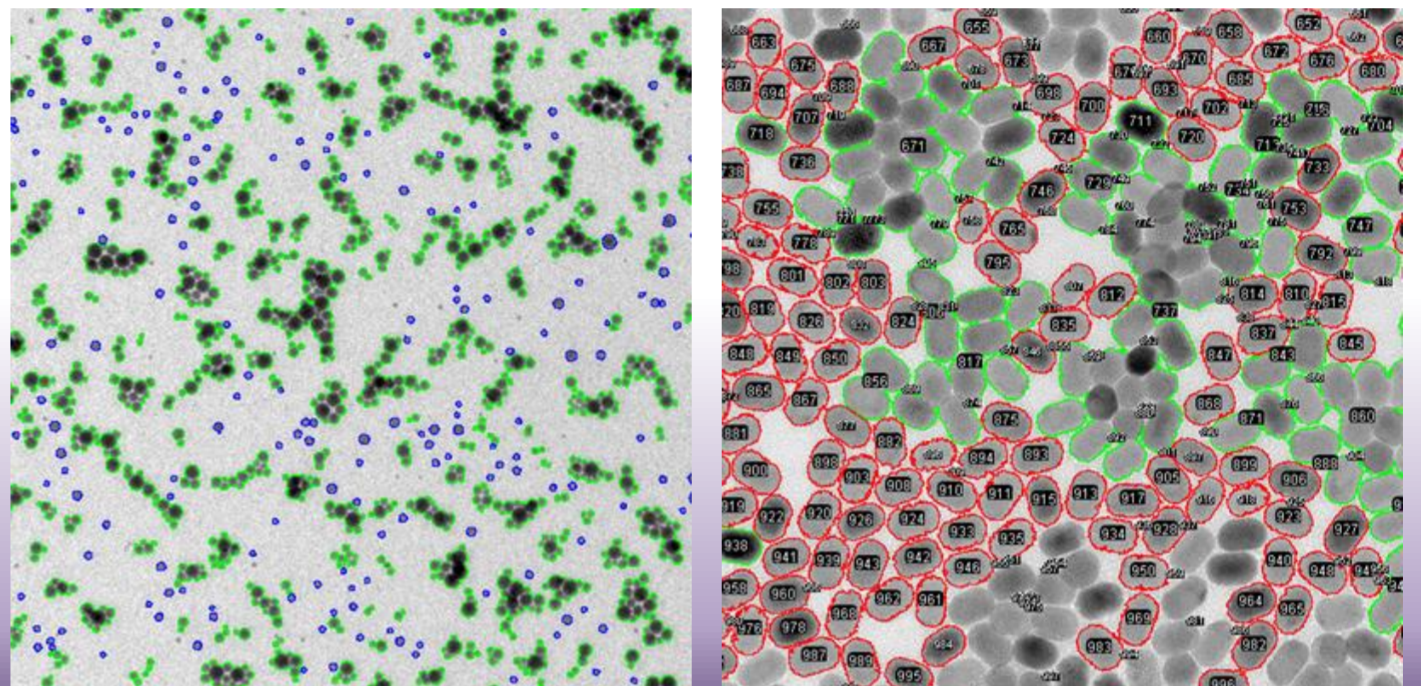
Contact window: [Eva Chen](mailto:Eva.Chen@bioma-tek.com) \_ [service@bioma-tek.com](mailto:service@bioma-tek.com)  
[Lin-Ai Tai](mailto:Lin-Ai.Tai@bioma-tek.com) \_ [project@bioma-tek.com](mailto:project@bioma-tek.com)

# Automatic Counting software ParticlePro

**A customized platform for massive data process**

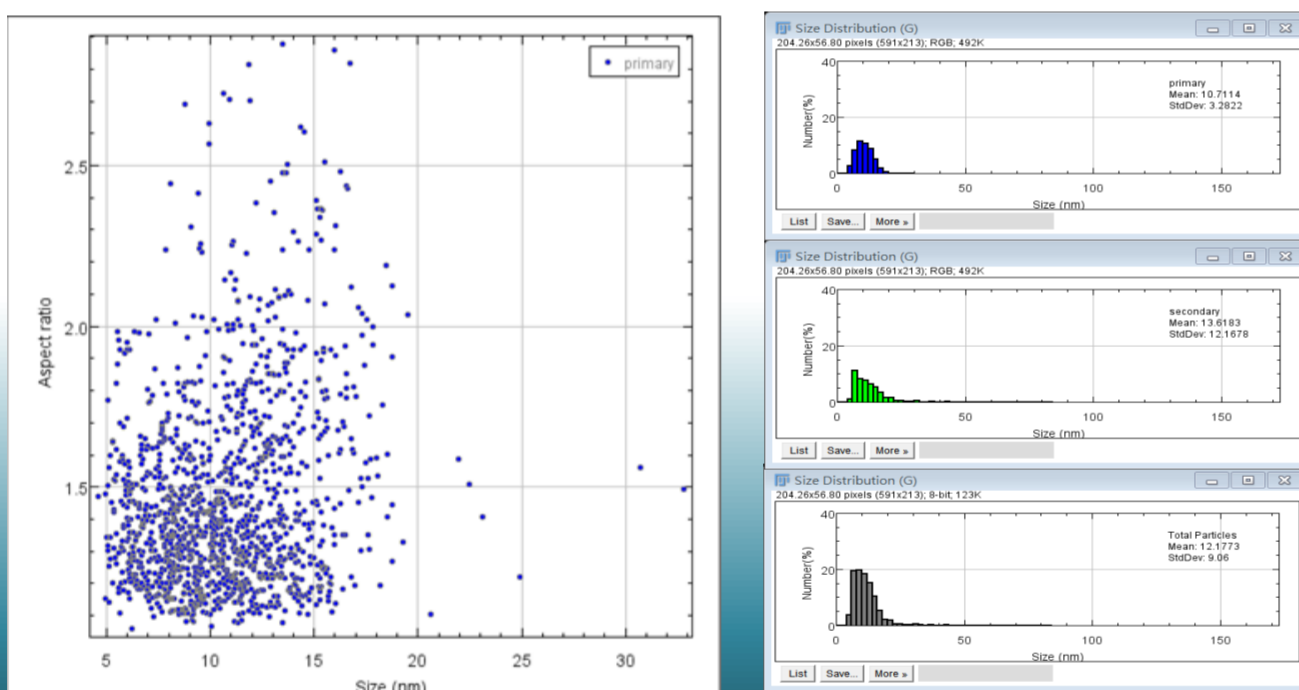
## MASSIVE COUNTING

Processing massive number of particles automatically in short time



## CLASSIFICATION

Classifying particle types wisely by brief training



## DATA BANK

Building mega data base according to your demands

| 1  | Label     | Area    | Mean    | Circ.   | Feret   | MinFeret | AR      | Round   | Solidity |
|----|-----------|---------|---------|---------|---------|----------|---------|---------|----------|
| 2  | usebleCut | 86.6002 | 90.4915 | 0.31219 | 15.5778 | 9.76506  | 1.5577  | 0.64197 | 0.78093  |
| 3  | usebleCut | 115.244 | 94.9501 | 0.23033 | 17.8707 | 10.6941  | 1.79852 | 0.55601 | 0.76127  |
| 4  | usebleCut | 88.4741 | 91.4478 | 0.47234 | 12.8882 | 10.6901  | 1.1656  | 0.85793 | 0.83302  |
| 5  | usebleCut | 41.4932 | 95.8613 | 0.22618 | 10.6852 | 7.52869  | 1.21075 | 0.82593 | 0.70136  |
| 6  | usebleCut | 69.8691 | 84.5651 | 0.59276 | 11.145  | 9.72738  | 1.09023 | 0.91723 | 0.85997  |
| 7  | usebleCut | 71.3415 | 86.8386 | 0.36307 | 13.2164 | 9.85416  | 1.50827 | 0.66301 | 0.72271  |
| 8  | usebleCut | 43.367  | 96.9877 | 0.49109 | 8.81092 | 7.2084   | 1.15485 | 0.86592 | 0.85263  |
| 9  | usebleCut | 132.243 | 49.1346 | 0.63726 | 15.5563 | 12.1519  | 1.30996 | 0.76338 | 0.91018  |
| 10 | usebleCut | 102.93  | 64.2198 | 0.57462 | 15.9388 | 9.94182  | 1.73344 | 0.57689 | 0.84785  |
| 11 | usebleCut | 184.711 | 93.5587 | 0.38619 | 21.411  | 13.5799  | 1.61129 | 0.62062 | 0.81729  |
| 12 | usebleCut | 14.9911 | 85.625  | 0.53873 | 6.23026 | 3.99336  | 1.45107 | 0.68915 | 0.75676  |
| 13 | usebleCut | 39.0839 | 89.2432 | 0.30046 | 9.98586 | 7.61052  | 1.19641 | 0.83583 | 0.69359  |

Contact window: *Eva Chen* \_ [service@bioma-tek.com](mailto:service@bioma-tek.com)  
*Lin-Ai Tai* \_ [project@bioma-tek.com](mailto:project@bioma-tek.com)